

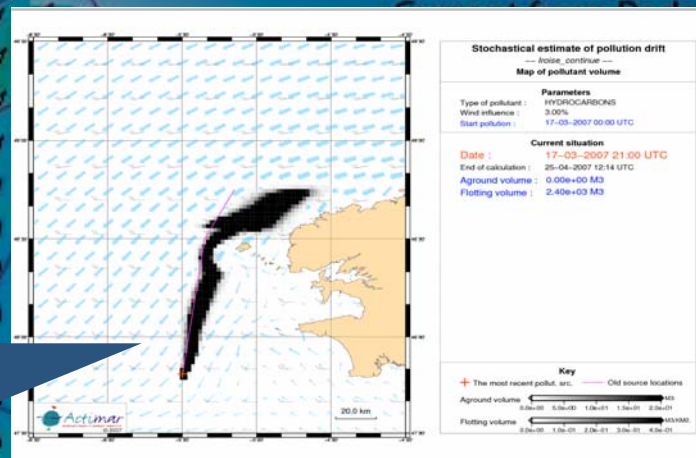
Ocean Current Drift Prediction for SAR and Environmental Applications



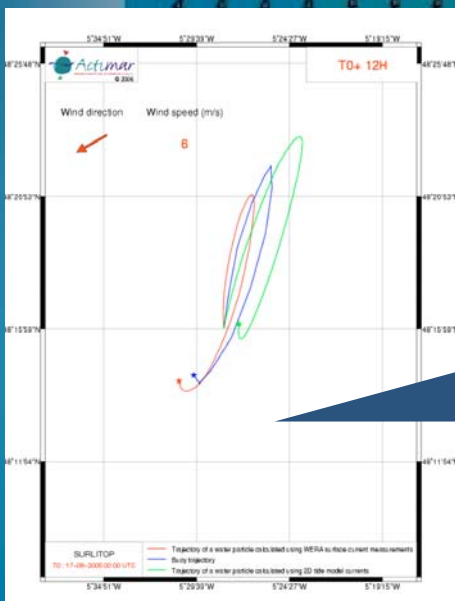
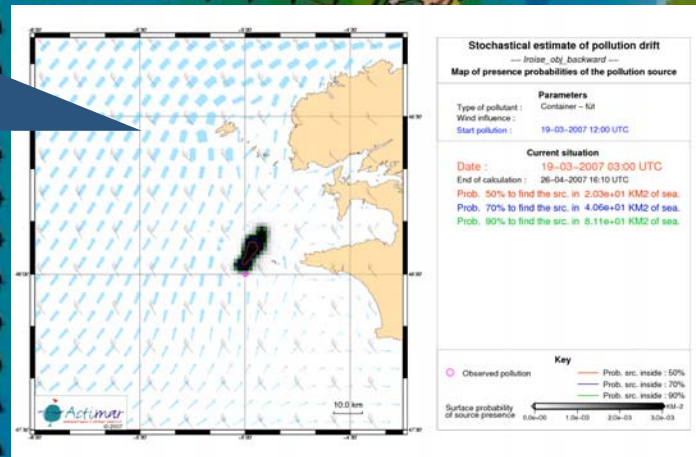
WERA provides reliable ocean current data in near real-time.

These data can be used in **combination** with **numerical models** to increase the reliability of **drift predictions** for environmental protection applications and for **Search and Rescue (SAR)**.

Drift Prediction of Oil Spill after Vessel Accident



Back Tracking of Drifting Oil Slick to Identify Source of Pollution.



Drift Prediction of "man-overboard"



WERA - CurDrift, a valuable tool for maritime authorities, insurance and ship operators

CurDrift combines real-time WERA data with numerical models to provide accurate residual currents.

Fields of Application

- Maritime safety
- Search and Rescue
- Salvage operations
- Environmental protection
- Homeland security (customs)
- Scientific applications

WERA real-time data improves the reliability of drift predictions to be used for:

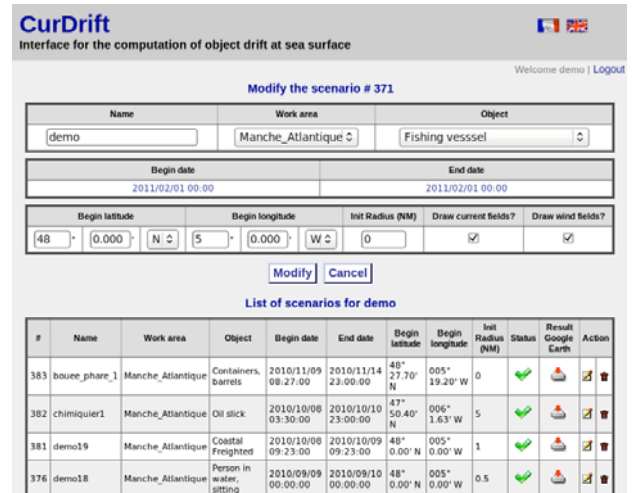
- SAR of lost people at sea
- Search of drifting containers
- Risk analysis of drifting boats
- Pollution (oil spill) drift
- Reverse drift analysis to identify polluters
- Simulation and analysis of incident scenario

List of provided services

- Customized configuration of CurDrift software
- Integration into existing networks
- Operational services and data management
- Implementation of regional meteorological and hydro dynamical models to provide reliable ocean current forecasts
- Access to dedicated or instant forecasts

Features of drift model "CurDrift"

- Easy to handle via web based user interface
- Setting of uncertainty as a parameter



CurDrift
Interface for the computation of object drift at sea surface

Welcome demo | Logout

Modify the scenario # 371

Name	Work area	Object
demo	Manche_Atlantique C	Fishing vessel

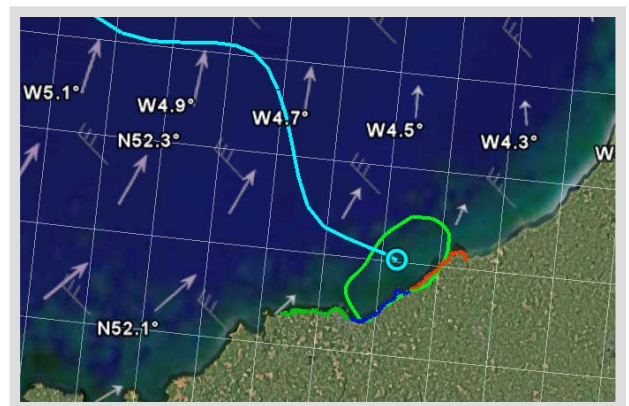
Begin date	End date
2011/02/01 00:00	2011/02/01 00:00

Begin latitude	Begin longitude	Init Radius (NM)	Draw current fields?	Draw wind fields?
48	0.000 N	5	0.000 W	0

Modify Cancel

List of scenarios for demo

#	Name	Work area	Object	Begin date	End date	Begin latitude	Begin longitude	Init Radius (NM)	Status	Result Google Earth	Action
383	bouee_phare_1	Manche_Atlantique	Containers, barrels	2010/11/09 08:27:00	2010/11/14 23:00:00	48° 27.70' N	005° 19.20' W	0	✓		
382	chimiquier1	Manche_Atlantique	Oil slick	2010/10/08 03:30:00	2010/10/10 23:00:00	47° 50.40' N	006° 1.63' W	5	✓		
381	demo19	Manche_Atlantique	Coastal Freighted	2010/10/08 09:23:00	2010/10/09 09:23:00	48° 00.00' N	005° 0.00' W	1	✓		
376	demo18	Manche_Atlantique	Person in water, sitting	2010/09/09 00:00:00	2010/09/10 00:00:00	48° 00.00' N	005° 0.00' W	0.5	✓		



The WERA systems can be purchased or leased.