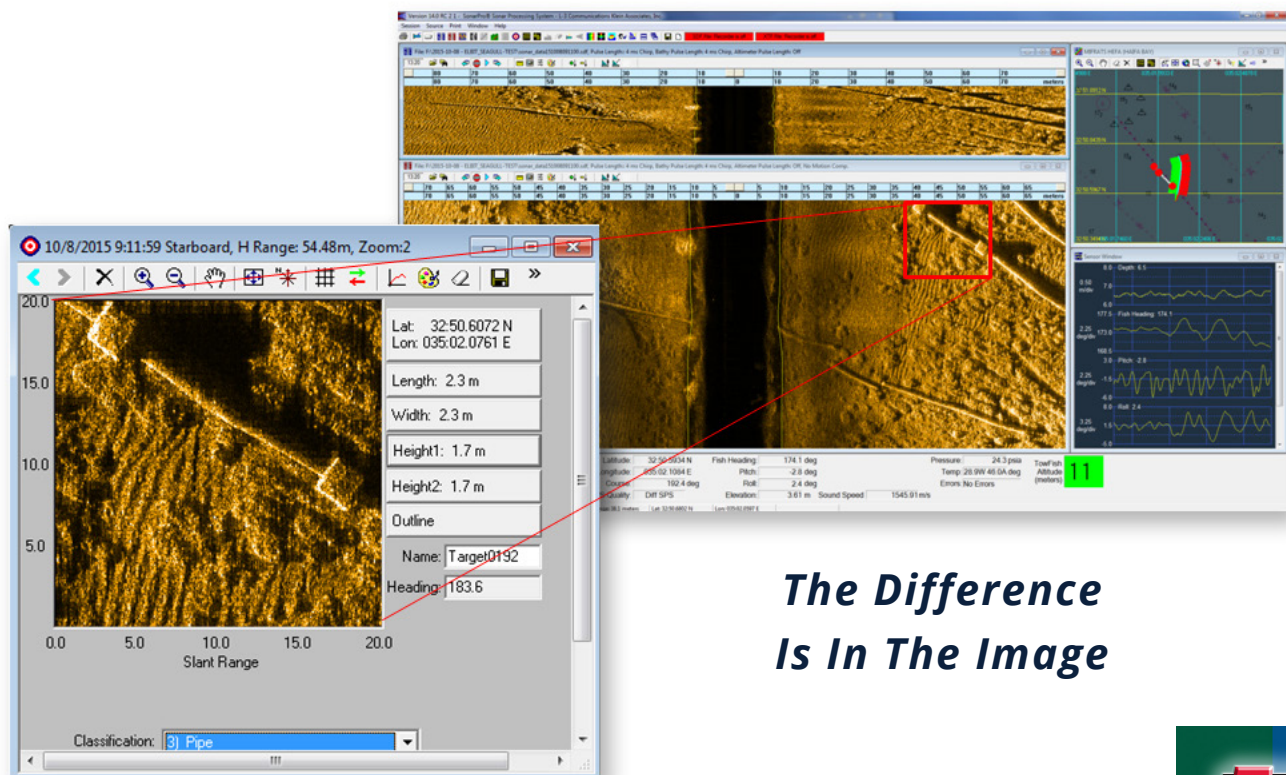


HIGH-RESOLUTION, DYNAMICALLY FOCUSED, MULTI-BEAM SIDE SCAN SONAR

in a removable nose cone assembly for collecting (filling in) seafloor side scan-like data in the sonar nadir region. When installed, coverage rates are improved (reduced) by as much as 40%. An interferometric swath bathymetry sonar is another available option with the 5900 system. Swath bathymetry provides the “third dimension” or topographic information, not available from side scan data alone, and it is co-registered with the side scan data. When both data sets are post-processed, side scan data can be accurately draped over the bathymetry mosaic, providing a complete, spatially accurate image of the seafloor. Identified bottom objects can be relocated and prosecuted with greater efficiency, as positional accuracy is increased when the bathymetry depths and contours are known.



The Difference Is In The Image

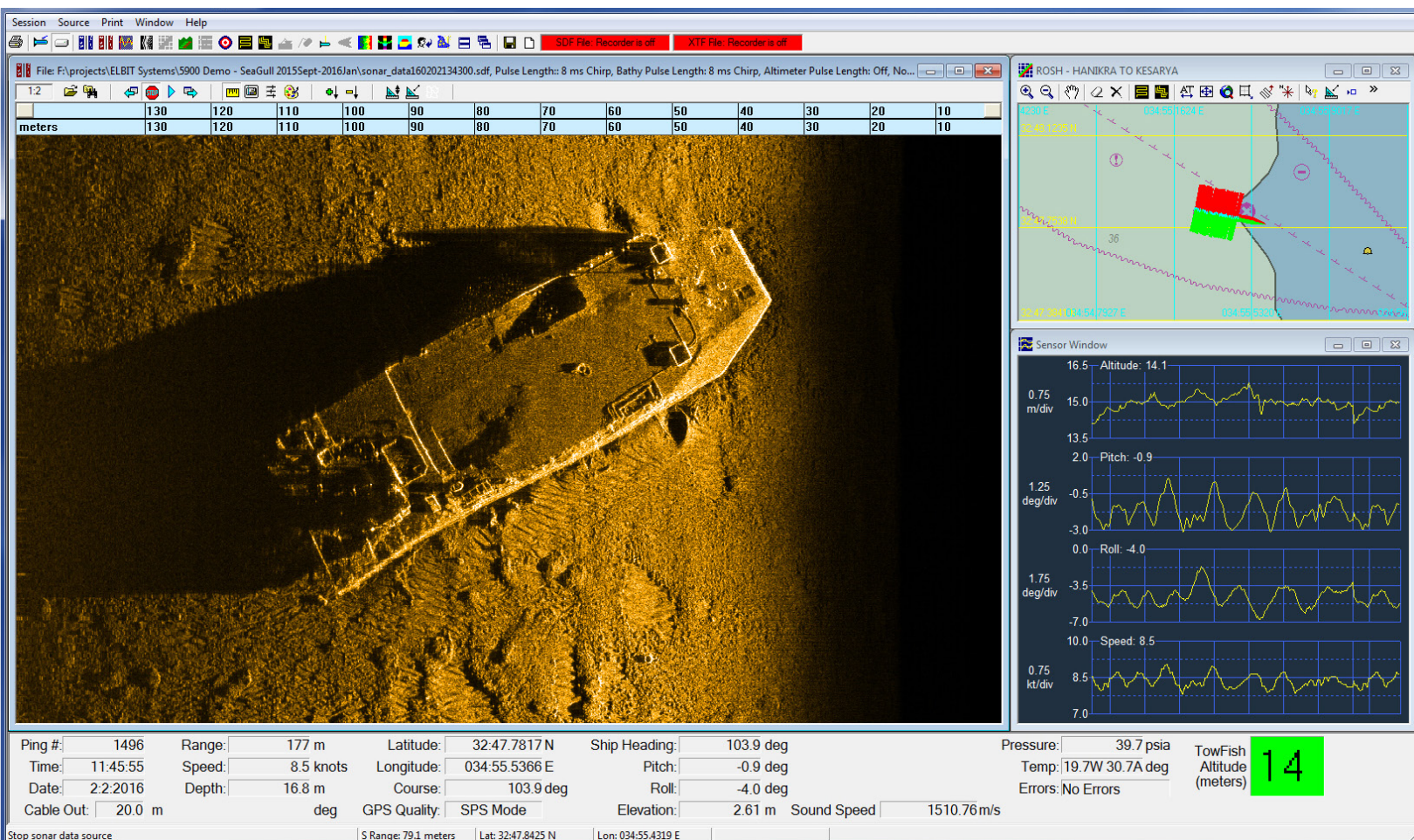
Key Features:

- Variable multi-beam (up to 20 beams per side, per ping) for high-speed, high-resolution coverage
- 1.8 m long array, 600 kHz operating frequency, provides twice the resolution of the System 5000
- Integrated 6-degrees-of-freedom motion reference unit (MRU) for dynamic digital beam stabilization
- FM-Chirp transmit coding, extremely low-noise acquisition and 28-bit analog-to-digital converter contribute to a very wide dynamic-range sonar system
- Dynamic focusing, high-pixel density imagery provides enhanced contrast for target/shadow definition
- Swath bathymetry for rapid environmental assessment
- K-Wing IV depressor provides stabilization, roll offset, depression and emergency fast-rise capability
- Optional Gap Filler Sonar provides full bottom coverage and extremely fast area coverage rates
- SAS-ready composite array fabrication optimized for multi-path and surface reverberation suppression
- BITE – Built-in test equipment

Applications:

- Mine Countermeasures (MCM) mission support
- Intelligence, Surveillance and Reconnaissance (ISR) missions
- Route surveys
- Rapid environmental (bathymetry) assessment surveys
- Port and harbor security
- Hydrographic surveys

Klein System 5900 at 150 m range.



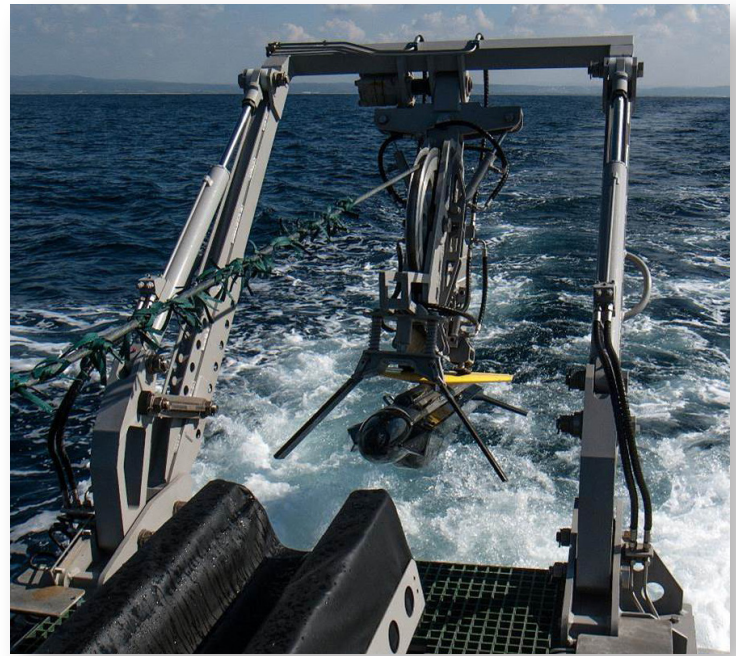
Multi-Function Platform:

The Klein System 5900 is a multi-functional platform that allows the operator to perform high-speed surveys with 100% bottom coverage. Only multi-beam side scan sonar systems can truly support high-speed data acquisition. The increased coverage rate supports overall efficiency, reduces survey time and provides significant cost savings. The large footprint of the tow body provides a completely stable towing environment, thus increasing both acoustic performance, natural depression capabilities and overall robustness. The variable multi-beam feature allows the number of beams to increase with tow speed as needed to maintain 100% bottom coverage with up to 20 beams per side.

With advanced embedded data compression built directly into the data acquisition software, the system can drive up to 750 meters of copper cable, reducing the need in many applications for more costly fiber-optic cables.

Klein's System 5900 standard towfish sensors provide increased performance and functionality. The magnetic heading compass is removed from the EMI environment and located outside of the pressure housing, eliminating electromagnetic interference, while the acoustic altimeter provides a strong bottom-track resolution, which is independent of the side scan sonar and ensures safe towing operations.

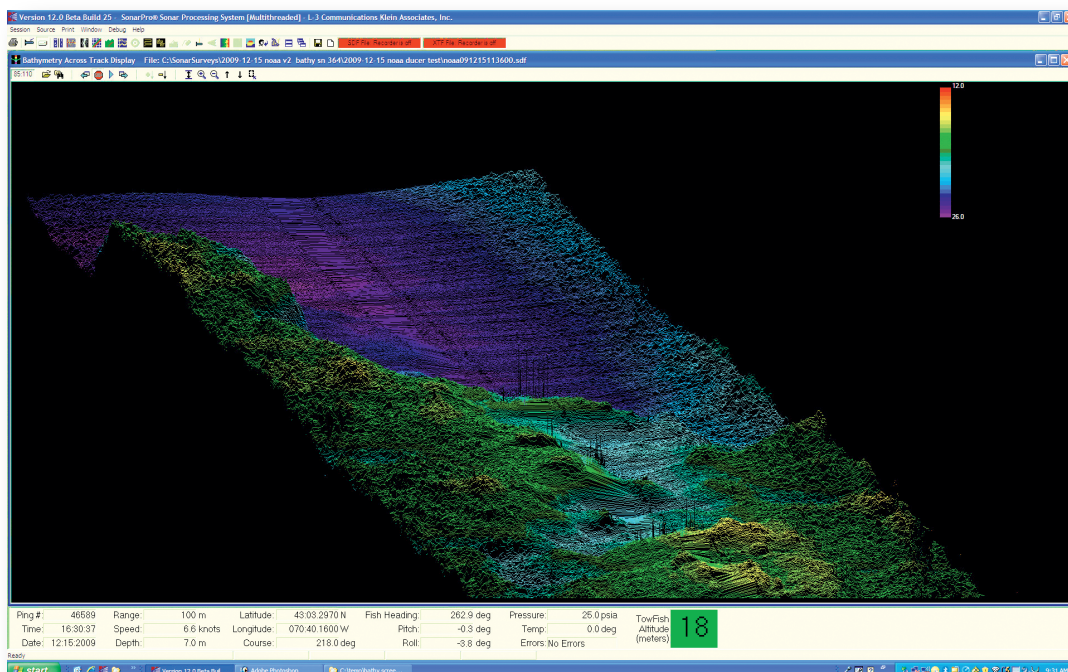
Beam forming is performed at the surface. Raw data is recorded, allowing for advanced post-processing, and if needed, reprocessing.



Swath Bathymetry:

Klein's System 5900 can be configured with an optional swath bathymetric sonar, which uses phase differencing signal processing to produce simultaneous estimates of the seabed topography out to the full-swath extent of the sonar, typically 10 to 12 times the overall altitude of the tow fish. Changes in topography are easily recognizable with the co-registered 3-D model of the ocean floor. The real-time co-registered data provides for instant fusion with side scan, backscatter imagery and can be used to more accurately position seabed targets.

Bathymetry data
@ 455 kHz.

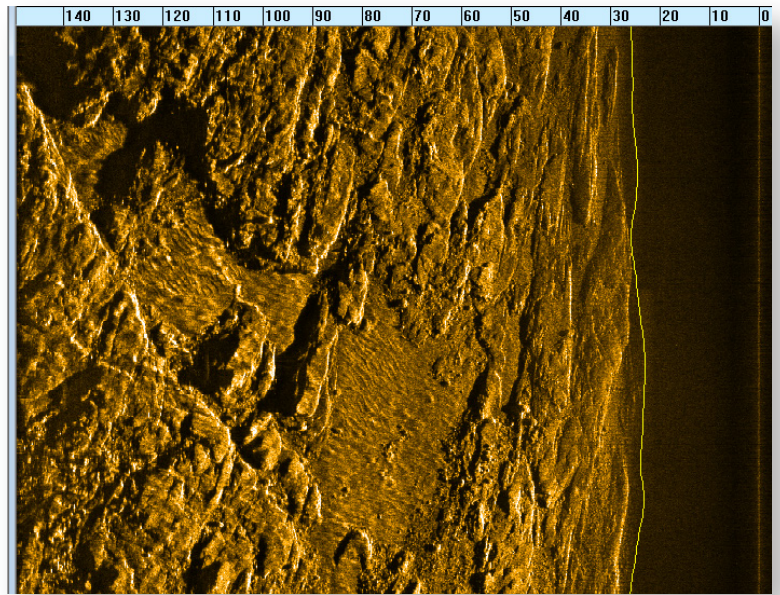


Standard Towfish Accessories:

- Compass – Heading
- Motion Reference Unit
- Dedicated Acoustic Altimeter – 170 kHz
- Depth Pressure Sensor
- Water Temperature Sensor
- Responder Interface
- Magnetometer Interface

Optional Towfish Accessories:

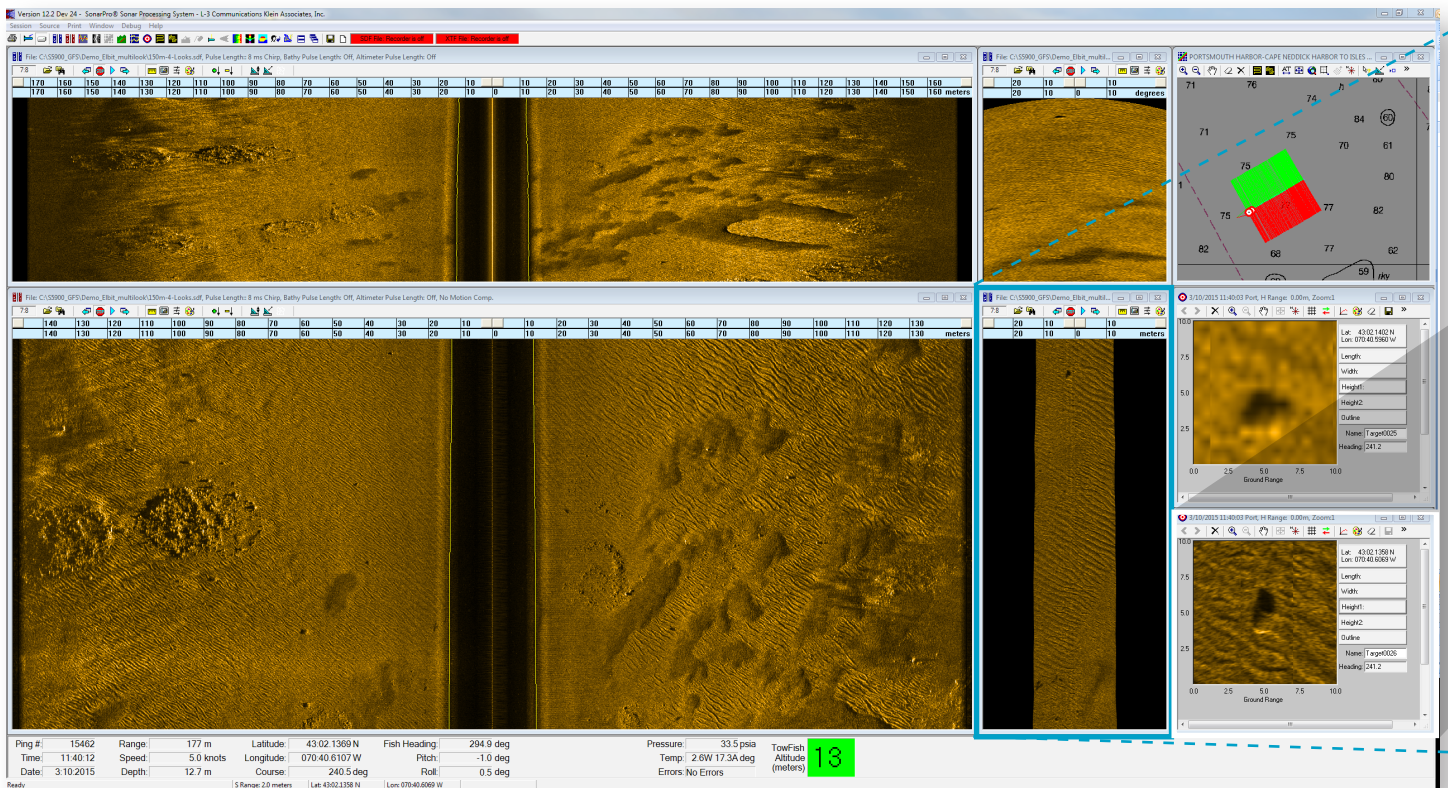
- K-Wing IV - Dynamically Controlled
- K-Wing II
- Gap Filler Sonar – Nadir coverage
- Interferometric Swath Bathymetry Sonar
- Sound Velocity Sensor (recommended when bathymetry sonar is purchased)



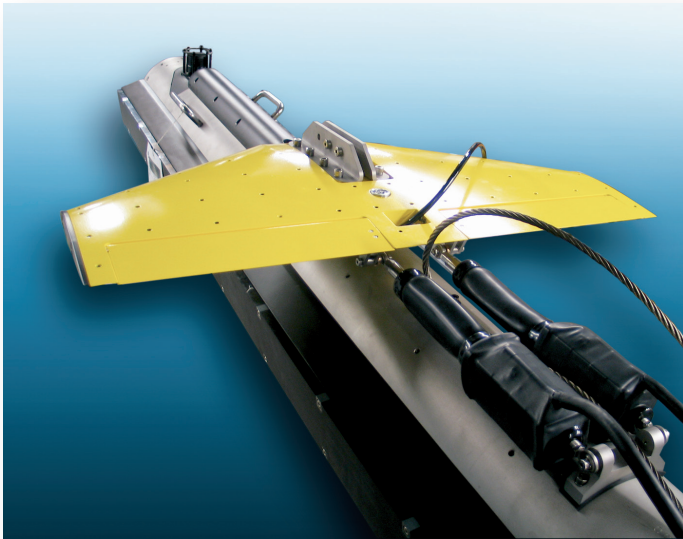
Klein 5900 at 150 m range without optional Gap Filler

ONLY KLEIN CAN DELIVER THIS DEPTH OF SONAR IMAGE QUALITY!

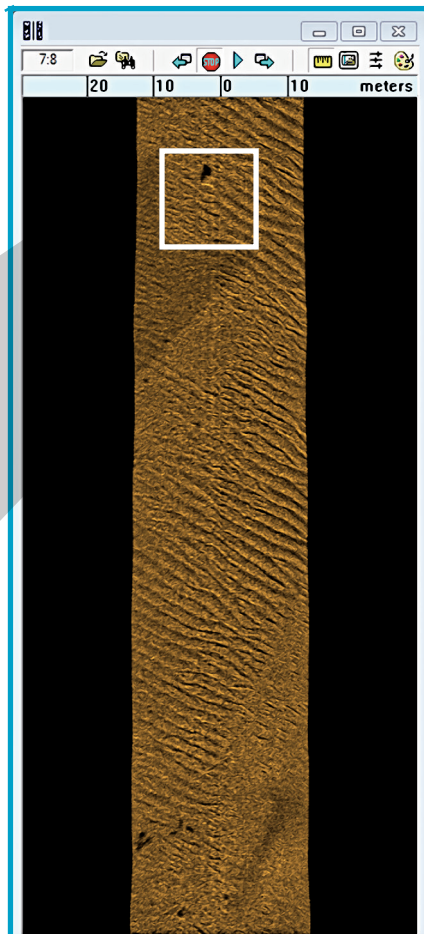
Klein System 5900 with optional Gap Filler Sonar (quality control and processed beam displays) at 150 m range.



High-Resolution, Dynamically Focused, Multi-Beam Side Scan Sonar



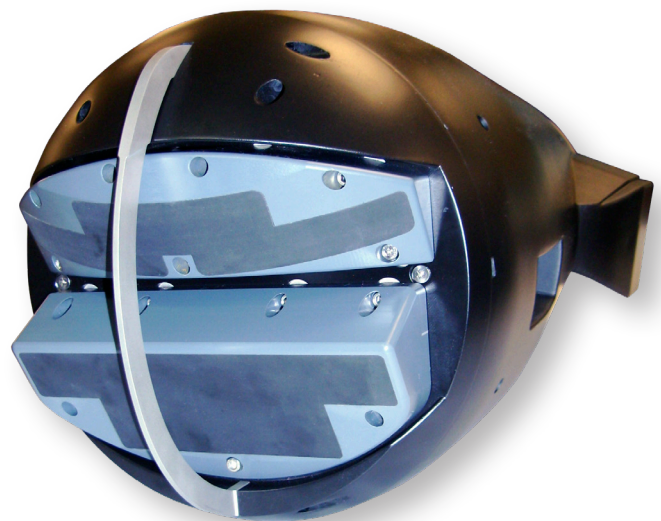
The K-Wing IV uses hydrodynamic forces to depress and steady the towfish while underwater. Dual ailerons are integrated and adjustable in the Klein SonarPro® software or via SDK to compensate for roll bias, slight adjustments in altitude and fast-rise capability.



K-Wing IV (Optional)	
Construction	Aluminum
Dimensions	30.5 in x 15.625 in x 2.5 in
Weight	In air: 38 kg (84 lb) In water: 12 kg (27 lb)
Swath Bathymetry Sonar (Optional)	
Frequency	455 kHz
Transmit Pulse	CW, FM-Chirp
Along-Track Resolution	0.4° [single swath per ping]
Swath Coverage	10 to 12 times altitude
Gap Filler Sonar (Optional)	
Frequency	750 kHz
Transmit Pulse	CW, FM-Chirp
Along-Track Resolution	4.8 cm
Across-Track Resolution	< 0.5°
Gap Coverage	to 45° each side
Declination	Tilted down 30° from horizontal

Optional Gap Filler:

The optional Gap Filler increases the rate of coverage by 40%, providing a full swath with gapless coverage.



SYSTEM 5900 SIDE SCAN SONAR

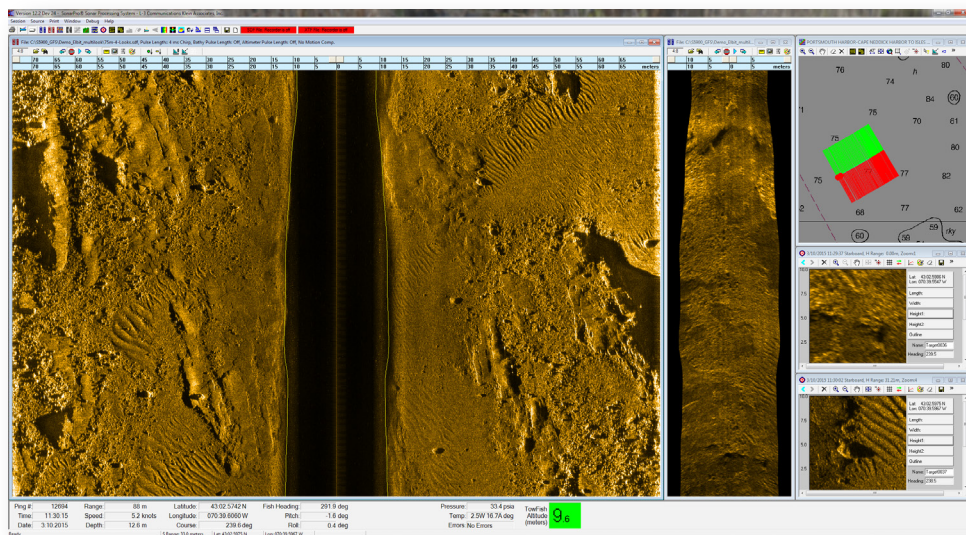
HIGH-RESOLUTION, DYNAMICALLY FOCUSED, MULTI-BEAM SIDE SCAN SONAR



Specifications:

Tow Fish General Specifications	
Construction	316 Stainless Steel
Length Without Gap Filler Sonar (GFS)	2.36 m (93 in)
Length With Gap Filler Sonar (GFS)	2.73 m (107 in)
Outer Diameter	20 cm (8 in)
Weight	In air: 238 kg (525 lb with Bathy) In water: 179 kg (394 lb) nominal
Maximum Depth Rating	750 m
Operating Speed Envelope	2 to 14 knots (with 100% bottom coverage)
Topside Assembly Dimensions / Weight	
Towfish Interface Unit (TIU)	2U 19-in rack-mount chassis
Sonar Processing Unit (SPU)	2U 19-in rack-mount chassis
High-Voltage Power Supply (HVPS)	1U 19-in rack-mount chassis
Workstation PC	2U 19 in rack mount chassis, 27 in monitor, with SonarPro® and Windows installed
System Power Requirements	100-125 or 200-250 VAC, 50/60 Hz at 1,000 W nominal

Multi-Beam Side Scan Sonar Specifications	
Technology	Multi-Beam Sonar with dynamic focus and dynamic aperture (maintains 100% bottom coverage, up to 20 beams per side)
Frequency	600 kHz
Along Track Resolution	6.2 cm at 50 m range setting (constant) 9.3 cm at 75 m range scale 15.5 cm at 125 m range scale [0.07° beamwidth]
Across Track	3.75 cm
Transmit Pulse	CW, FM-Chirp
Maximum Operating Range	150 m (nominal)/side
Array Length	1.8 m
Vertical Beamwidth	Optimized for shallow water operations
Background to Shadow Contrast Ratio (CR)	> 10 dB - at detection range of 150 m > 15 dB - at classification range of 75 m
Output Data Format	SDF (Sonar Data Format), XTF (Extended Triton Format) or both, - selectable -also supported via SDK
Tow Cable	750 m coaxial; > 3,000 m fiber-optic cable



Left:
Klein System 5900
with optional Gap Filler Sonar
(processed beam displays
with targets)
at 75 m range.

This technical data and software is considered as Technology Software Publicly Available (TSPA) as defined in Export Administration Regulations (EAR) Part 734.7-11. Specifications subject to change without notice. SonarPro® is a registered trademark of Klein Marine Systems, Inc. Cleared for public release. Data, including specifications, contained within this document are summary in nature and subject to change at any time without notice at Klein Marine Systems' discretion. Call for latest revision. All brand names and product names referenced are trademarks, registered trademarks, or trade names of their respective holders. Rev 12/17

KLEIN MARINE SYSTEMS, INC.
11 Klein Drive • Salem, New Hampshire 03079
Tel: 603.893.6131 • Fax: 603.893.8807 • Email: sales@kleinmarinesystems.com
www.kleinmarinesystems.com